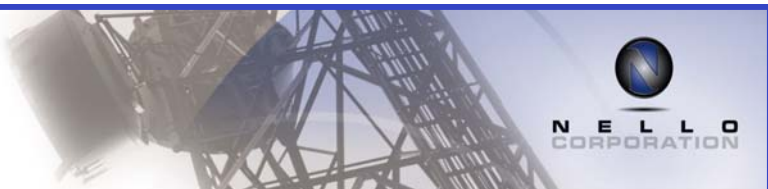
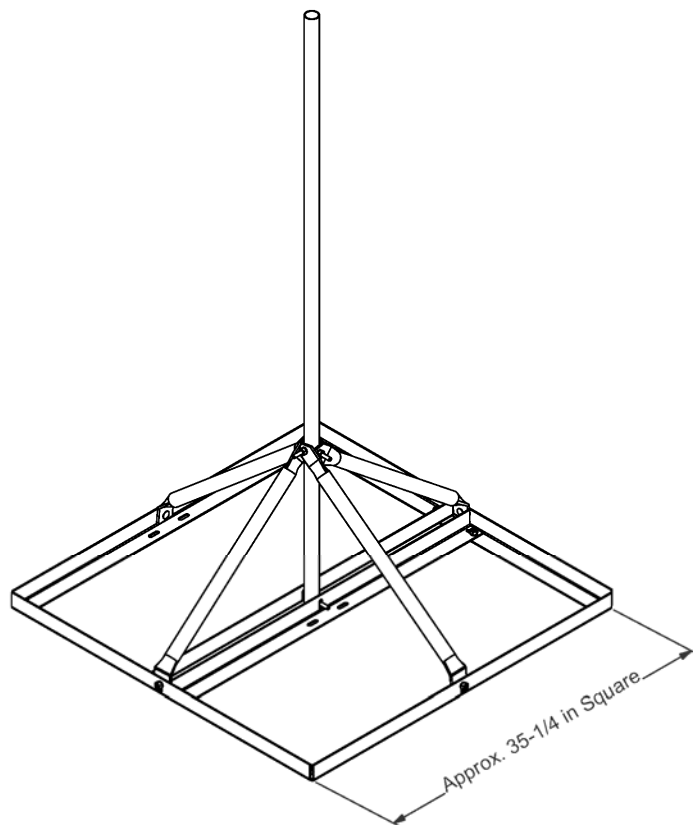


# Roof-Top Applications



## Non-Penetrating Flat Roof Mounts

<b>Material Included:</b>	Pre galvanized mast, base and hardware	<b>Design:</b>	Designed for DSS support
<b>Order Separately:</b>	Rubber Mat	<b>Mounts to:</b>	n/a



Part #	Description	Weight (Lbs)
103489	FRM Non-Penetrating Roof Mount (1.25" O.D. Tubing, 60" Overall Mast Height)	31.0
103490	FRM Non-Penetrating Roof Mount (1.50" O.D. Tubing, 30" Overall Mast Height)	29.0
103491	FRM Non-Penetrating Roof Mount (1.66" O.D. Tubing, 30" Overall Mast Height)	30.0
103492	FRM Non-Penetrating Roof Mount (2.375" O.D. Tubing, 30" Overall Mast Height)	32.0
103493	FRM Non-Penetrating Roof Mount (2.375" O.D. Tubing, 60" Overall Mast Height)	37.0

Rooftop Applications

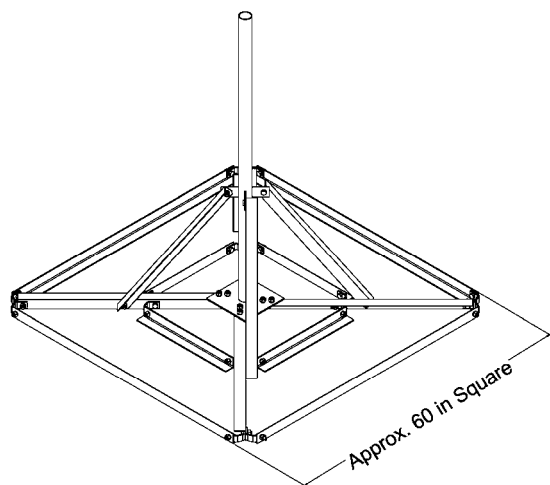


# Roof-Top Applications

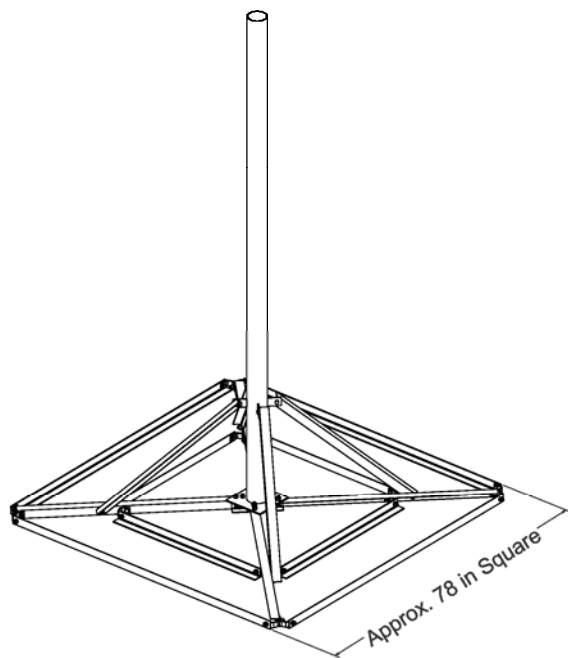


## Non-Penetrating Flat Roof Mounts - Heavy Duty

<b>Material</b>	Hot dip	<b>Design:</b>	Designed for
<b>Included:</b>	galvanized mast, base and hardware		large dish/antenna support
<b>Order</b>	Rubber Mat	<b>Mounts to:</b>	n/a
<b>Seperately:</b>			



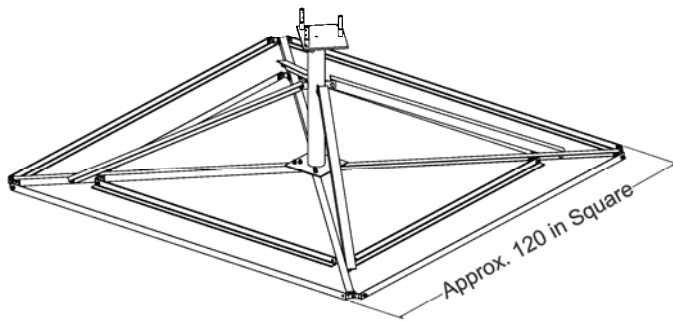
Part #	Description	Weight (Lbs)
<b>60" Square Footprint</b>		
103798	JRM Non-Penetrating Roof Mount (2.375 OD Tubing, 5' Overall Mast Height)	111.0
107460	JRM Non-Penetrating Roof Mount (2.875 OD Tubing, 5' Overall Mast Height)	121.0
103799	JRM Non-Penetrating Roof Mount (2.375 OD Tubing, 10' Overall Mast Height)	129.0
103801	JRM Non-Penetrating Roof Mount (2.875 OD Tubing, 10' Overall Mast Height)	150.0
<b>78" Square Footprint</b>		
107146	BRM Non-Penetrating Roof Mount, 2-3/8" OD x 120" Pipe Mount	161.0
107145	BRM Non-Penetrating Roof Mount, 3-1/2" OD x 120" Pipe Mount	200.0
106913	BRM Non-Penetrating Roof Mount, 4-1/2" OD x 120" Pipe Mount	233.0



# Roof-Top Applications



## Non-Penetrating Flat Roof Mount for 25N

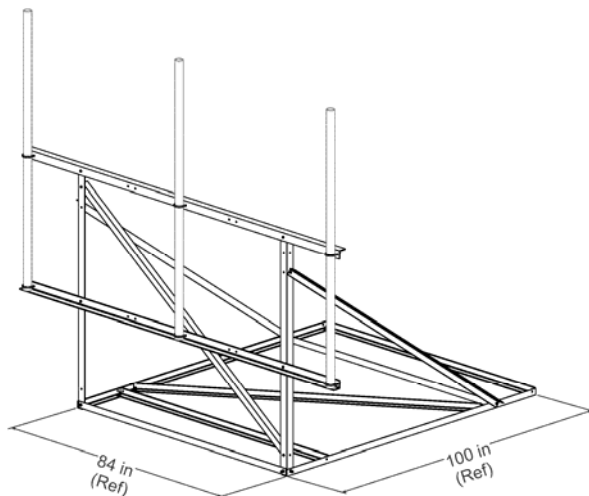


<b>Material</b>	Hot dip	<b>Design:</b>	Designed for
<b>Included:</b>	galvanized mast, base and hardware		15N/20N/25N support
<b>Order</b>	Rubber Mat	<b>Mounts to:</b>	n/a
<b>Separately:</b>			

Part #	Description	Weight (Lbs)
102815	Non Penetrating Roof Top for 25N	287.6

Roof-Top  
Applications

## Non-Penetrating Roof Frames



<b>Material</b>	Hot dip galv.	<b>Design:</b>	Single sector
<b>Included:</b>	frame, pipes and hardware		roof mount
<b>Order</b>	Rubber mats and	<b>Mounts to:</b>	n/a
<b>Separately:</b>	pipe mounts		

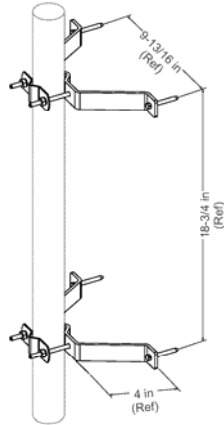
Part #	Description	Weight (Lbs)
<b>Non-Penetrating Roof Frame, 10'-6" Wide</b>		
104126	Non-Penetrating Roof Frame, 10'-6". 2-3/8" OD pipe not included.	295.0
107640	Non-Penetrating Roof Frame, 10'-6". Three 2-3/8" OD x 84" pipe mounts included.	374.0
104127	Non-Penetrating Roof Frame, 10'-6". Three 2-3/8" OD x 108" pipe mounts included.	396.0
104128	Non-Penetrating Roof Frame, 10'-6". Four 2-3/8" OD x 84" pipe mounts included.	400.0
104129	Non-Penetrating Roof Frame, 10'-6". Four 2-3/8" OD x 108" pipe mounts included.	429.0
<b>Non-Penetrating Roof Frame, 12' Wide</b>		
104130	Non-Penetrating Roof Frame, 12'-6". 2-3/8" OD pipe not included.	324.0
104131	Non-Penetrating Roof Frame, 12'-6". Three 2-3/8" OD x 84" pipe mounts included.	403.0
104132	Non-Penetrating Roof Frame, 12'-6". Three 2-3/8" OD x 108" pipe mounts included.	425.0
104133	Non-Penetrating Roof Frame, 12'-6". Four 2-3/8" OD x 84" pipe mounts included.	429.0
104134	Non-Penetrating Roof Frame, 12'-6". Four 2-3/8" OD x 108" pipe mounts included.	458.0
<b>Non-Penetrating Roof Frame, 15' Wide</b>		
104135	Non-Penetrating Roof Frame, 15'. 2-3/8" OD pipe not included.	404.0
104136	Non-Penetrating Roof Frame, 15'. Three 2-3/8" OD x 84" pipe mounts included.	483.0
104137	Non-Penetrating Roof Frame, 15'. Three 2-3/8" OD x 108" pipe mounts included.	505.0
104138	Non-Penetrating Roof Frame, 15'. Four 2-3/8" OD x 84" pipe mounts included.	509.0
104139	Non-Penetrating Roof Frame, 15'. Four 2-3/8" OD x 108" pipe mounts included.	538.0

# Roof-Top Applications

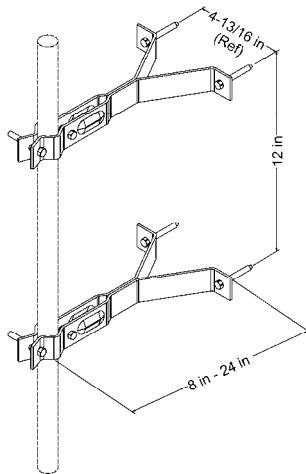


## Wall Mount Brackets

<b>Material</b>	Pre-galv. Clamps	<b>Design:</b>	Knee brace
<b>Included:</b>	and hardware incl. lag bolts		included on 12" and larger
<b>Order</b>	Mast pipes up to	<b>Mounts to:</b>	n/a
<b>Seperately:</b>	1-3/4" OD		



Part # 102643

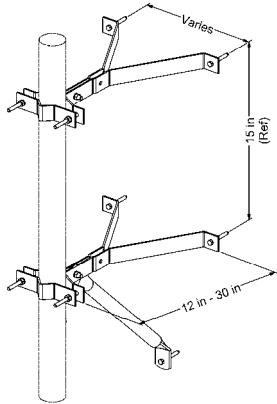


Part #	Description	Weight (Lbs)
102643	Double Wall Mount Kit, 4" Wide, Fits 1" O.D. to 2" O.D. Mast	2.1
102850	Double Wall Mount Kit, 8" - Standard, Fits 1.25" O.D. to 1.75" O.D. Mast	0.8
103024	Double Wall Mount Kit, 12" - Standard, Fits 1.25" O.D. to 1.75" O.D. Mast	4.0
104367	Double Wall Mount Kit, 18" - Standard, Fits 1.25" O.D. to 1.75" O.D. Mast	6.0
103026	Double Wall Mount Kit, 24" - Standard, Fits 1.25" O.D. to 1.75" O.D. Mast	7.0

# Roof-Top Applications



## Wall Mount Brackets, Heavy Duty

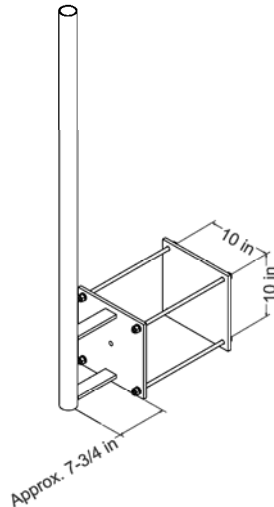


<b>Material</b>	Pre-galv. Clamps	<b>Design:</b>	Knee brace
<b>Included:</b>	and hardw are incl. lag bolts		included on 12" and larger
<b>Order</b>	Mast pipes from	<b>Mounts to:</b>	n/a
<b>Seperately:</b>	2" to 4" OD		

Part #	Description	Weight (Lbs)
102986	Double Wall Mount Kit, 12" Wide, Fits 2" O.D. to 4" O.D. Mast	4.0
103025	Double Wall Mount Kit, 18" Wide, Fits 2" O.D. to 4" O.D. Mast	6.0
102987	Double Wall Mount Kit, 24" Wide, Fits 2" O.D. to 4" O.D. Mast	7.0
102791	Single Wall Mount Kit, 30" Wide, Fits 2" O.D. to 4" O.D. Mast	4.0

Roof-top Applications

## Universal Wall Mount



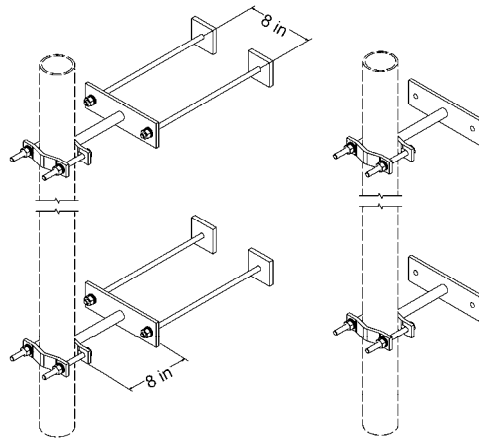
<b>Material</b>	Hot dip	<b>Design:</b>	Welded dual
<b>Included:</b>	galvanized wall mount and hardw are for hollow wall.		support arm with 2-3/8" OD mast pipe.
<b>Order</b>	Wall anchors for	<b>Mounts to:</b>	Hollow or
<b>Seperately:</b>	solid walls		solid wall

Part #	Description	Weight (Lbs)
101842	Wall Mount Assembly, Hollow Walls (2-3/8" OD x 0.154" WT x 63" Long)	68.0
101843	Wall Mount Assembly, Solid Walls (2-3/8" OD x 0.154" WT x 63" Long)	43.0
101844	Wall Mount Assembly, Hollow Walls (2-3/8" OD x 0.154" WT x 72" Long)	70.0
101845	Wall Mount Assembly, Solid Walls (2-3/8" OD x 0.154" WT x 72" Long)	46.0

# Roof-Top Applications



## Gable/Eave Mount



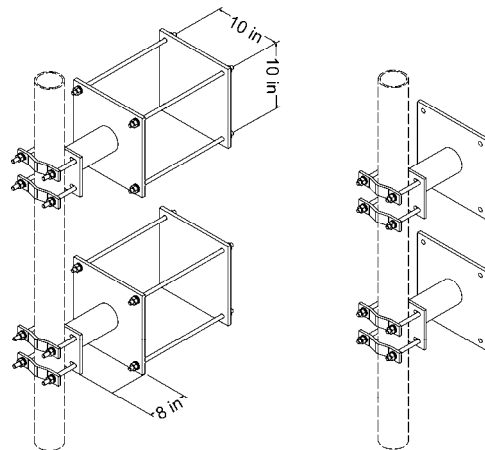
P/N 101838

P/N 101839

<b>Material Included:</b>	Hot dip galvanized brackets and hardware for hollow walls.	<b>Design:</b>	Welded brackets with mast size up to 3-1/2" OD.
<b>Order Separately:</b>	Pipe mast and solid wall anchors	<b>Mounts to:</b>	Hollow or solid wall

Part #	Description	Weight (Lbs)
101838	Wall Mount Brackets for Hollow Walls. 1-1/2" to 3-1/2" OD. Kit of 2.	22.2
101839	Wall Mount Brackets for Solid Walls. 1-1/2" to 3-1/2" OD. Kit of 2.	13.1

## Pole Wall Mount



P/N 102483

P/N 102484

<b>Material Included:</b>	Two hot dip galvanized brackets and hardware	<b>Design:</b>	Welded dual level brackets. 4 bolt pattern.
<b>Order Separately:</b>	Wall anchors for solid walls	<b>Mounts to:</b>	Hollow or solid wall

Part #	Description	Weight (Lbs)
102483	Heavy Duty Wall Mount Brackets for Hollow Walls. 1-1/2" to 4-1/2" OD. Kit of 2.	112.0
102484	Heavy Duty Wall Mount Brackets for Solid Walls. 1-1/2" to 4-1/2" OD. Kit of 2.	64.0

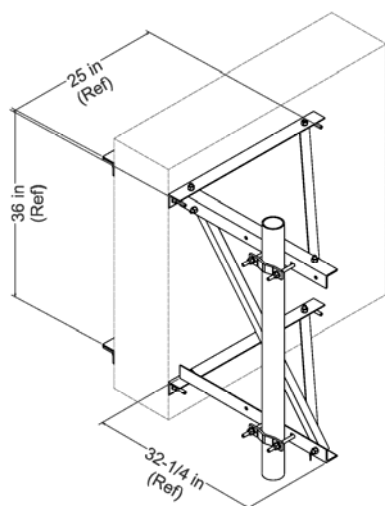




# Roof-Top Applications



## Wall Mounts

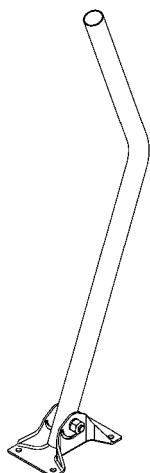


<b>Material</b>	Hot dip galv	<b>Design:</b>	Variable mast
<b>Included:</b>	angles, clamps and hardware		pipe location. 2-7/8" to 5" OD
<b>Order</b>	Mast pipe and	<b>Mounts to:</b>	n/a
<b>Seperately:</b>	w all attachment hardware		

Part #	Description	Weight (Lbs)
102506	Pole Wall Mount Assembly	83.3

Roof  
Applications

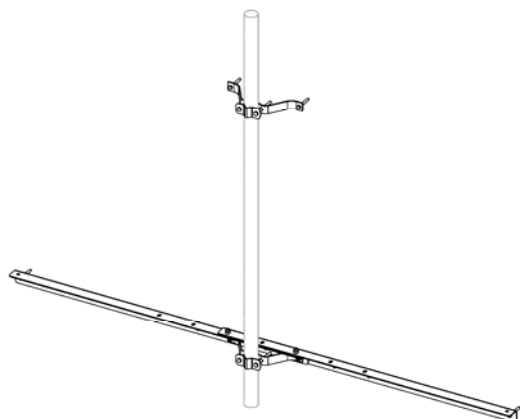
## Double Wall Mount Kits, Wide



<b>Material</b>	Pow der coated	<b>Design:</b>	Universal
<b>Included:</b>	mast pipe, base plate and hardware		design with 1.66" OD mast pipe.
<b>Order</b>	Wall anchor	<b>Mounts to:</b>	n/a
<b>Seperately:</b>			

Part #	Description	Weight (Lbs)
102342	Universal Wall Mount, 1.66" OD Mast Pipe	3.0

## Double Wall Mount Kits, Standard



<b>Material</b>	Galvanized steel	<b>Design:</b>	Adjustable
<b>Included:</b>	support braces and connecting hardware.		design w ith tw o support locations
<b>Order</b>	Wall anchors and	<b>Mounts to:</b>	Gable/Eave
<b>Seperately:</b>	1-1/4" mast tubing.		location

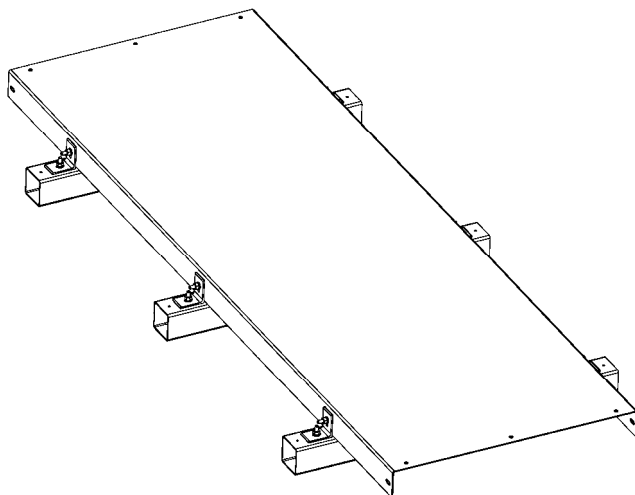
Part #	Description	Weight (Lbs)
102642	Adjustable Gable/Eave Mount (Adjusts 40"-60")	6.9

# Roof-Top Applications



## Roof-Top Coax Bridge Kits

<b>Material Included:</b>	Galv steel channel, 3 sleepers and hardware	<b>Design:</b>	4, 8, 12 run version. Solid cover with PVC sleepers
<b>Order Separately:</b>	n/a	<b>Mounts to:</b>	Non-penetrating design

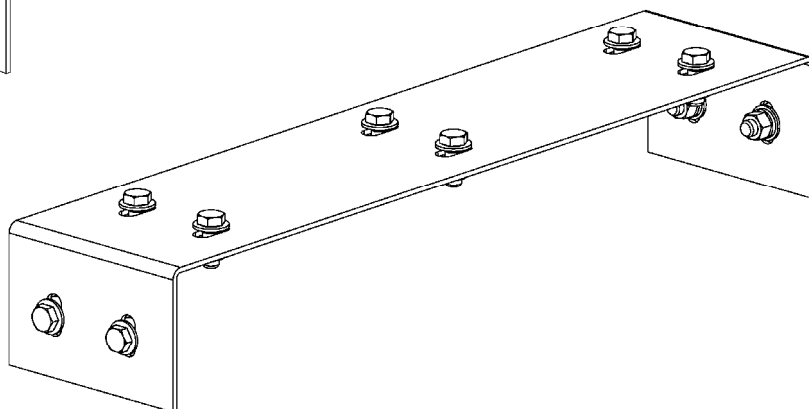
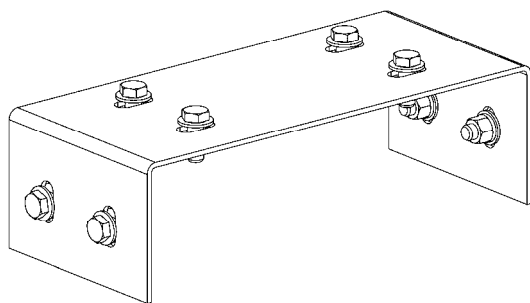


Part #	Description	Weight (Lbs)
100914	4 Line Coax Bridge Kit.	68.0
100477	8 Line Coax Bridge Kit.	103.0
100913	12 Line Coax Bridge Kit.	138.0

## Coax Bridge Splice Kits, Straight

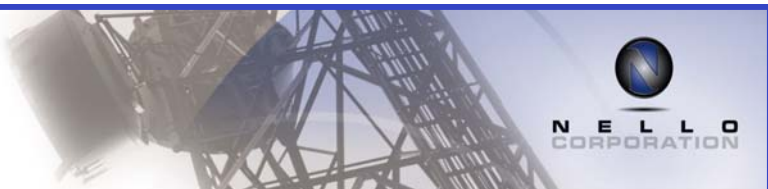
<b>Material Included:</b>	Galv steel channel and hardware	<b>Design:</b>	4, 8, 12 run version.
<b>Order Separately:</b>	n/a	<b>Mounts to:</b>	Roof-top bridge kit

Part #	Description	Weight (Lbs)
101145	4 Line Coax Bridge Splice Kit, Straight.	2.9
100491	8 Line Coax Bridge Splice Kit, Straight.	4.7
100912	12 Line Coax Bridge Splice Kit, Straight.	6.3



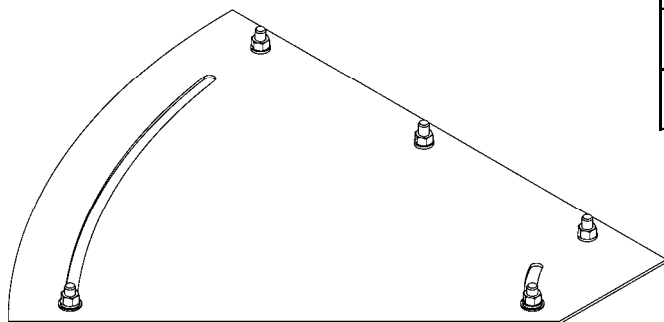


# Roof-Top Applications



## Coax Bridge Splice Kits, 0 - 45 degrees

<b>Material</b>	Galv steel splice	<b>Design:</b>	4, 8, 12 run
<b>Included:</b>	and hardw are		version.
<b>Order</b>	n/a	<b>Mounts to:</b>	Roof-top
<b>Seperately:</b>			bridge kit



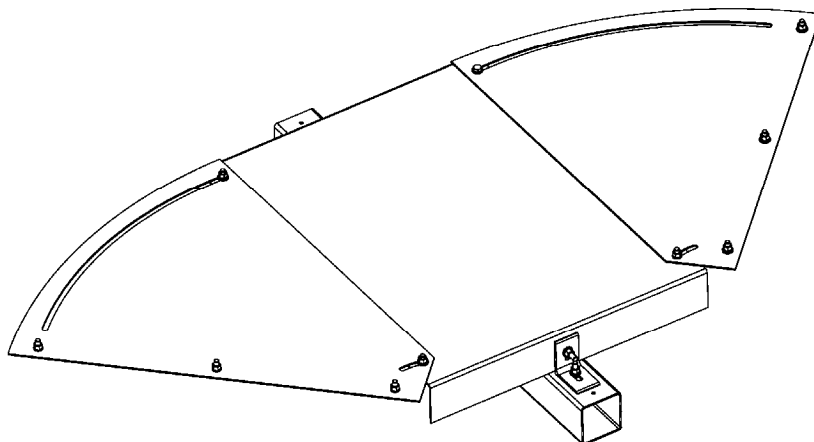
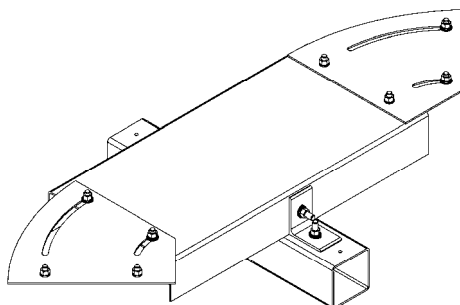
Part #	Description	Weight (Lbs)
100947	4 Line Coax Bridge Splice Kit, 0 - 45 degrees.	3.3
100490	8 Line Coax Bridge Splice Kit, 0 - 45 degrees.	9.0
100948	12 Line Coax Bridge Splice Kit, 0 - 45 degrees.	17.6

Roof-top  
Applications

## Coax Bridge Splice Kits, 0 - 90 degrees

<b>Material</b>	Galv steel	<b>Design:</b>	4, 8, 12 run
<b>Included:</b>	channel and splices. Sleeper and hardw are		version.
<b>Order</b>	n/a	<b>Mounts to:</b>	Roof-top
<b>Seperately:</b>			bridge kits

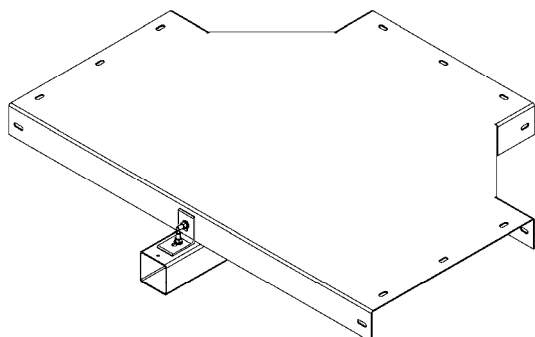
Part #	Description	Weight (Lbs)
101170	4 Line Coax Bridge Splice Kit, 0 - 90 degrees.	24.0
101139	8 Line Coax Bridge Splice Kit, 0 - 90 degrees.	45.4
101154	12 Line Coax Bridge Splice Kit, 0 - 90 degrees.	71.6



# Roof-Top Applications



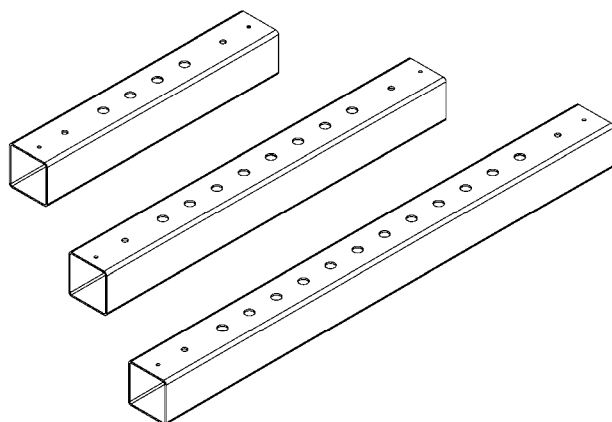
## Coax Bridge Splice Kits, T-Splice



<b>Material</b>	Galv steel	<b>Design:</b>	4, 8, 12 run version.
<b>Included:</b>	channel and splices. Sleeper and hardw are		
<b>Order</b>	n/a	<b>Mounts to:</b>	Roof-top
<b>Seperately:</b>			bridge kits

Part #	Description	Weight (Lbs)
101167	4 Line Coax Bridge Splice Kit, T-Splice.	31.0
101140	8 Line Coax Bridge Splice Kit, T-Splice.	58.1
101164	12 Line Coax Bridge Splice Kit, T-Splice.	71.3

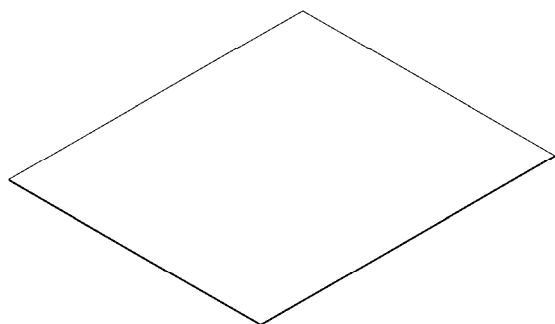
## PVC Sleepers



<b>Material</b>	PVC sleeper	<b>Design:</b>	4, 8, 12 run version.
<b>Included:</b>			
<b>Order</b>	n/a	<b>Mounts to:</b>	Roof-top
<b>Seperately:</b>			bridge kits

Part #	Description	Weight (Lbs)
101057	4 Hole PVC Sleeper	1.8
100488	8 Hole PVC Sleeper	2.8
101092	12 Line PVC Sleeper	3.4

## Rubber Mats



<b>Material</b>	Rubber mat	<b>Design:</b>	Helps to protect roof surface
<b>Included:</b>			
<b>Order</b>	n/a	<b>Mounts to:</b>	Roof-top
<b>Seperately:</b>			bridge kits and Non-pens.

Part #	Description	Weight (Lbs)
102758	Rubber Mat, 1/8" x 36" x 42"	7.3
101852	Rubber Mat, 1/4" x 4" x 10'	5.4
100557	Rubber Mat, 1/2" x 18" x 48"	19.5

# Roof-Top Applications



## Penetrating Tripod Mounts



<b>Material Included:</b>	Pre galvanized tube legs, corrosion resistant clamps and hardware	<b>Design:</b>	Various sizes, fully assembled
<b>Order Separately:</b>	Mast pipe	<b>Mounts to:</b>	n/a

Part #	Description	Weight (Lbs)
102633	Penetrating Tripod Mount, 36"	7.0
102634	Penetrating Tripod Mount, 60"	12.0
102637	Penetrating Tripod Mount - 120"	27.0
105307	Penetrating Tripod Mount - 120", Fits up to 2-1/4" Tubing	30.0

Roof-top Applications

## Heavy Duty Penetrating Tripod Mount



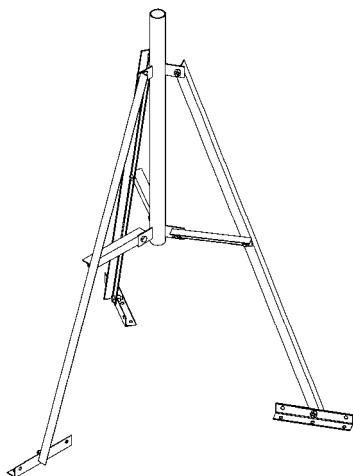
<b>Material Included:</b>	Pre galvanized tube legs, corrosion resistant clamps and hardware	<b>Design:</b>	Fully assembled
<b>Order Separately:</b>	n/a	<b>Mounts to:</b>	n/a

Part #	Description	Weight (Lbs)
102657	Penetrating Tri-Mast Mount, 60"	7.0

# Roof-Top Applications



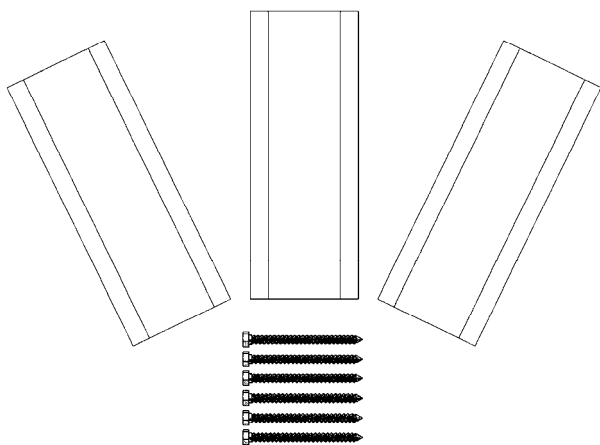
## Penetrating Trimast Mounts



<b>Material Included:</b>	Galvanized steel support angles, support mast and hardware.	<b>Design:</b>	Heavy duty design for larger antenna applications. 2" mounting pipe.
<b>Order Separately:</b>	Roof anchors	<b>Mounts to:</b>	n/a

Part #	Description	Weight (Lbs)
106245	Penetrating Tripod Mount, 60" - Heavy Duty	42.0

## Tri-Sector Mount



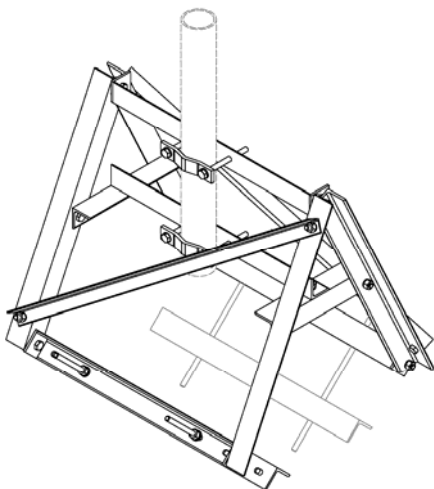
<b>Material Included:</b>	Rubber pads, screws and glue	<b>Design:</b>	Moisture/cushion barrier between mount and mounting surface.
<b>Order Separately:</b>	n/a	<b>Mounts to:</b>	n/a

Part #	Description	Weight (Lbs)
104104	Roof Pad kits	0.5

# Roof-Top Applications



## Pitch Pad Kit

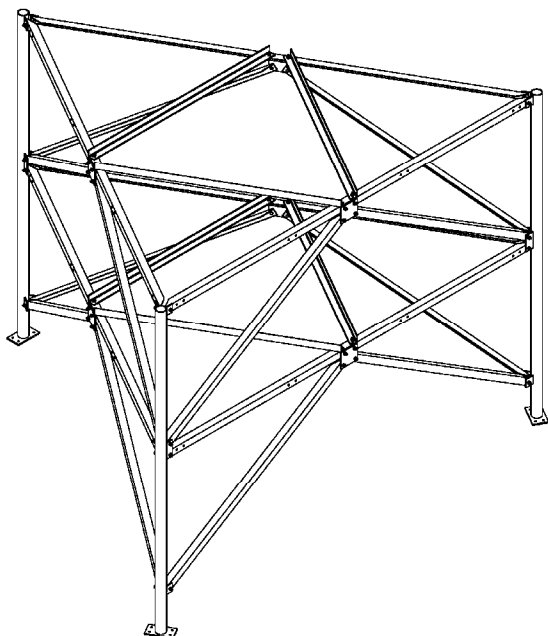


<b>Material</b>	Hot dip	<b>Design:</b>	Supports 1-
<b>Included:</b>	galvanized angle and hardware		1/4" to 4-1/2" OD mast pipes.
<b>Order</b>	mast pipes and	<b>Mounts to:</b>	Flat or peaked roofs to 45 degrees
<b>Seperately:</b>	anchor hardware		

Part #	Description	Weight (Lbs)
102712	Saw-Horse Penetrating Roofmount Assembly	120.9

Roof-Top Applications

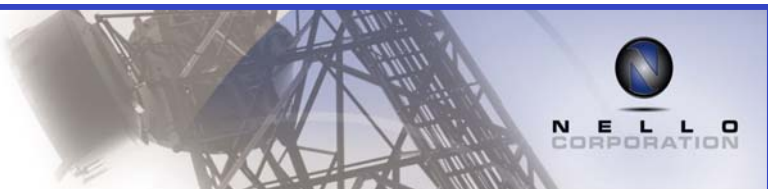
## Square Chimney Mount



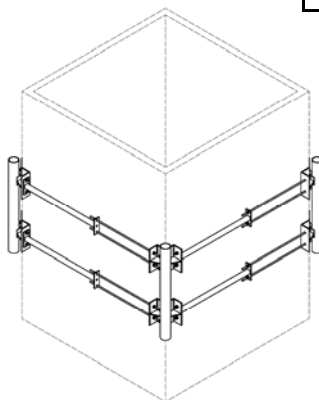
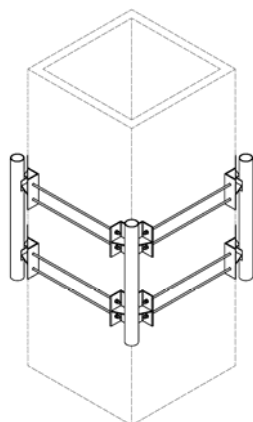
<b>Material</b>	Hot dip frame	<b>Design:</b>	13'-6" wide
<b>Included:</b>	members and hardware		face, 10' and 15' tall.
<b>Order</b>	pipe mounts and	<b>Mounts to:</b>	Roofs or platforms
<b>Seperately:</b>	roof beams		

Part #	Description	Weight (Lbs)
101252	Tri-Sector Rooftop Assembly, 10' Tall	923.3
104352	Tri-Sector Rooftop Assembly, 15' Tall	1370.0

# Roof-Top Applications



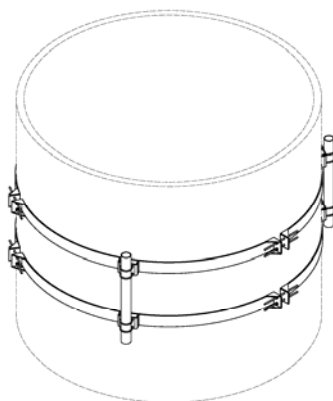
## Round Chimney Mount



<b>Material</b>	Hot dip	<b>Design:</b>	Four 4-1/2"
<b>Included:</b>	galvanized pipe corners, threaded rod and hardware.		OD x 48" corner mounting pipes
<b>Order</b>	Cross arms and	<b>Mounts to:</b>	Square or rectangular sections from 12" to 91"
<b>Seperately:</b>	pipe mounts		

Part #	Description	Weight (Lbs)
101268	Chimney Mount Assembly, square. 12" - 48" face.	465.6
102042	Chimney Mount Assembly, square. 48" - 91" Chimney.	605.4

## Wall Anchor



<b>Material</b>	Hot dip	<b>Design:</b>	Three 4-1/2"
<b>Included:</b>	galvanized pipe sectors, threaded rod and hardware.		OD x 48" 120 degree sector mounting pipes
<b>Order</b>	Cross arms and	<b>Mounts to:</b>	Diameters from 8' to 11'-6"
<b>Seperately:</b>	pipe mounts		

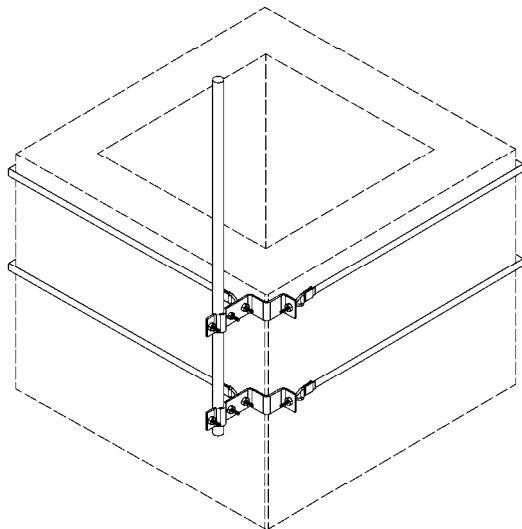
Part #	Description	Weight (Lbs)
102277	Chimney Mount Assembly, round. 8' - 11.5' diameter	1020.0



# Roof-Top Applications



## Light Duty Chimney Mount

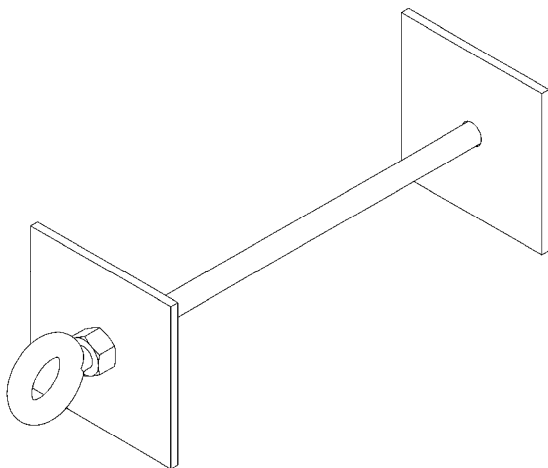


<b>Material Included:</b>	Pre-galvanized material and hardware.	<b>Design:</b>	Light weight design with two mast supports
<b>Order Separately:</b>	1-1/4" mast tubing	<b>Mounts to:</b>	Various Chimney sizes up a 12' circumference /perimeter

Part #	Description	Weight (Lbs)
104760	Z-Type Chimney Mount for up to 1-1/2" Dia. Tubing	1.0

Roof  
Top  
Applications

## Penetrating Saw Horse Mount



<b>Material Included:</b>	5/8" THD eye-bolt, nuts and wall plates.	<b>Design:</b>	Threaded eye-bolt design allows for adjustable wall/roof thicknesses
<b>Order Separately:</b>	n/a	<b>Mounts to:</b>	n/a

Part #	Description	Weight (Lbs)
105010	Threaded Wall Anchor (5/8" x 18" Wall Anchor)	5.4